



### The Manual Infeed Rotary Shear System

The M8LB Crumbler® rotary shear comminution machine is ideally suited for research and lab use. It has a small footprint but is strong enough to handle a wide range of materials including wood chips, corn stover, switchgrass, bamboo, sage, hemp, agave, and more. The machine is capable of processing up to 1/2 green tons\* per hour of your raw feedstocks into precision particles.

This Crumbler® system is designed for manual infeed use. A vibratory infeed Crumbler® system (M8L) is also available for purchase.

#### Key Features & Benefits:

- ✓ Processes both high and low moisture feedstocks (no pre-drying required)
- ✓ Produces highly uniform particles to increase conversion efficiencies
- ✓ Smooth, quiet operation
- ✓ 8" wide infeed capacity
- ✓ Small footprint – only 44W" X 34"D X 58"H
- ✓ Standard power – 460VAC 3ph (220VAC 1ph and 110VAC 1ph available)
- ✓ Low energy consumption
- ✓ Controls include push button start/stop and adjustable cutter speed
- ✓ Collection bin included

#### Options:

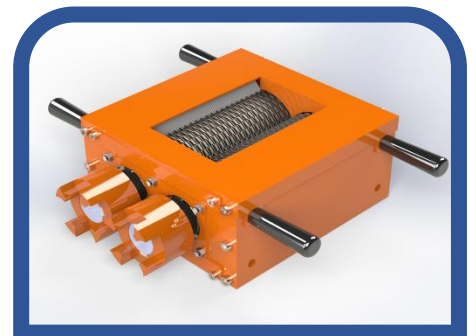
- ✓ Choose from 1.5hp, 3hp, or 5hp

#### Accessories:

- ✓ Requires HM8 series processing head (sold separately). Multiple cutter-width processing heads available to tailor feedstocks for your process (standard widths are 1/4", 3/16", 1/8", 1/16", and 3/64")
- ✓ FC2448-2 orbital two-deck screen
- ✓ Additional collection bins

*\*Throughput estimates based on ideal feedstocks and a skilled crew. Stated throughput is for green wood chips into 1/4" feedstock particles. Throughput is inversely proportional to comminution ratio and final particle size.*

Dust control may be needed depending on product moisture content and processing conditions.



**Call us to obtain a quote, arrange a test, or schedule a tour.**